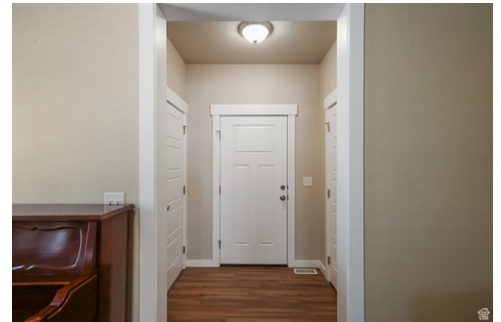




\$ 567,000



15186 S Liberty Bell Dr, Bluffdale, UT 84065

- » Beds: 4 | Baths: 3 Full, 1 Half
- » MLS #: 2095989
- » Single Family | 2,440 ft² | Lot: 3,049 ft²
- » More Info: [15186SLibertyBellDr.IsForSale.com](https://www.realtor.com/recent/sales/details/15186SLibertyBellDr.IsForSale.com)



David Harman Jr.
(801) 367-5663 (Mobile)
(801) 224-2010 (Business)
davidharmanjr@gmail.com

Harman Realty
55 West University Parkway
Orem, UT 84058

Nestled in a quiet and welcoming Bluffdale cul-de-sac, this beautiful home offers the perfect blend of comfort, convenience, and community. With 4 SPACIOUS BEDROOMS and 3.5 BATHROOMS, there's room for everyone to spread out and enjoy. LOCATED JUST MINUTES FROM I-15, you'll have quick access to both Salt Lake and Utah Counties-ideal for commuting to Silicon Slopes, or downtown Salt Lake City. Inside, thoughtful features include a MUDROOM WITH A DROP ZONE-perfect for coats, backpacks, and shoes. The UPSTAIRS LAUNDRY ROOM offers practical convenience, while the PRIMARY SUITE FEATURES FIVE WINDOWS that invite lots of natural light, a spacious walk-in closet, and a private ensuite bathroom. The RECENTLY FINISHED BASEMENT is designed for entertaining, complete with a WET BAR featuring upgraded cabinets, a sink, microwave, and mini fridge. Located near the HIGHLY RATED JORDAN SCHOOL DISTRICT, with Mountain Point Elementary, Hidden Valley Middle School and Riverton High School all just a short drive away. Several charter and private school options are also nearby including Summit Academy. OUTDOOR ENTHUSIASTS will love the easy access to a variety of parks and trails, including Wardle Fields Regional Park-just five minutes away-featuring splash pads, playgrounds, pavilions, and sports courts. THE NEARBY JORDAN RIVER PARKWAY TRAIL offers miles of scenic walking, hiking, and running paths. Connected

